

# Francesco Manfredini 12 Concerti – Opera Terza

## Concerto Decimo

Adagio

Violone

10

20

28

Detailed description: This section of the score is for the Violone part in the Adagio movement. It consists of four staves of music. The first staff starts with a treble clef, a key signature of one flat (B-flat), and a 3/4 time signature. The music is written in bass clef. The first staff contains measures 1 through 9. The second staff, starting at measure 10, continues the melodic line. The third staff, starting at measure 20, shows a continuation of the piece. The fourth staff, starting at measure 28, concludes the Adagio section with a double bar line.

Allegro

6

11

18

22

28

Detailed description: This section of the score is for the Violone part in the Allegro movement. It consists of eight staves of music. The first staff starts with a treble clef, a key signature of one flat (B-flat), and a common time signature (C). The music is written in bass clef. The first staff contains measures 1 through 5, including two triplet markings. The second staff, starting at measure 6, continues the piece. The third staff, starting at measure 11, includes a triplet marking. The fourth staff, starting at measure 18, includes two triplet markings. The fifth staff, starting at measure 22, continues the melodic line. The sixth staff, starting at measure 28, includes two triplet markings and concludes the Allegro section with a double bar line.

35

3

3

42

47

4

3

3

54

p.

f.

3

3

Largo

10

19

28

Presto

4

12

3

23

33

45

58

3

69

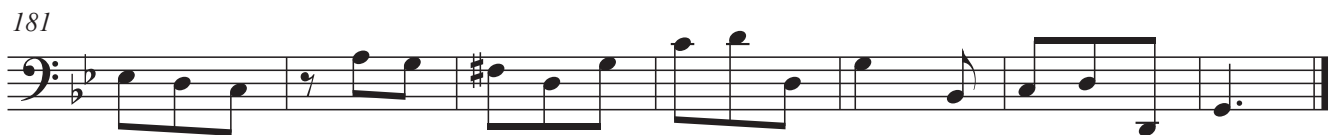
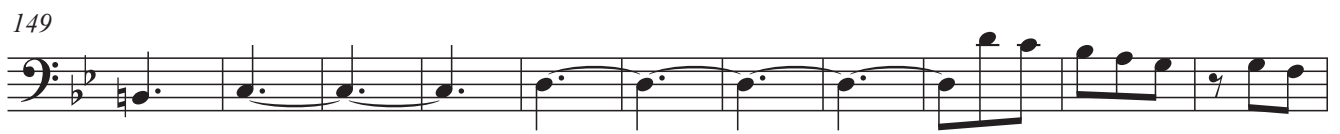
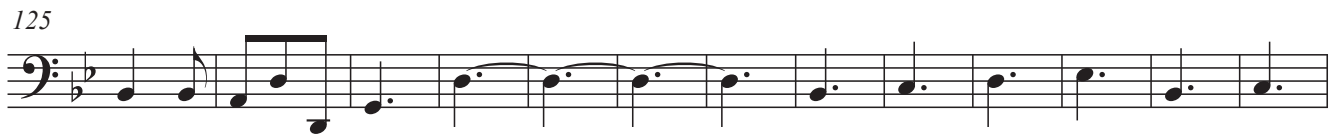
3

80

91

104

3



www.mueller-schade.com  
M&S 1066/14 • ISMN 979-0-50023-150-9

© 1999 by Musikverlag Müller & Schade AG, CH-3014 Bern/Switzerland  
Alle Rechte vorbehalten / All rights reserved / Tous droits réservés  
Vervielfältigungen jeglicher Art sind gesetzlich verboten.  
Any unauthorized reproduction is prohibited by law.  
Toute reproduction, par quelque procédé ce soit, est interdite par la loi.  
Swiss Made